

4-H County Fair Pen Requests for Large Animals

First priority for space will be given to clubs making requests by June 1.

After June 1, space will be subject to availability.

4-H members will be limited to a combined total of 6 entries in beef, dairy, dairy goat, pygmy goat, fiber goat, meat goat, sheep and swine classes.

Leader's Name: _____ Phone: _____

Club Name: _____

Superintendents Beef: Bill Simpson (503-728-0421) & Greg Schmidlin (971-762-9541)

4-H Beef Pen Request - Total Animals:

Number of Members Showing:	
Number of Steers:	
Number of Cows:	
Number of Cow & Calf Pairs:	

(For example: a cow with a calf would be listed only under cow and calf pairs as 1, not separately.)



Comments: _____

Superintendent Dairy Cow: Bill Simpson (503-728-0421) & Greg Schmidlin (971-762-9541)

4-H Dairy Cow Pen Request - Total Animals:

Number of Members Showing:	
Number of Cows:	
Number of Cow & Calf Pairs:	

(For example: a cow with a calf would be listed only under cow and calf pairs as 1, not separately.)

Comments: _____

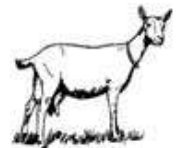
Superintendent Sheep: Jamie Carr (503-310-8949)

4-H Sheep Pen Request - Total Animals:

Number of Members Showing:	
Number of Sheep (double up appropriately):	
Number of Pens:	



Comments: _____



Superintendent Goats: Patty Vanderwerf (503-397-3227)

Goat Pen Request - Total Animals:

	Dairy Goats:	Pygmy Goats:	Fiber Goats:	Meat Goats:
Number of Members Showing:				
Number of Goats:				
Number of Single Pens:				
Number of Double Pens:				

(Fill in the blanks with your numbers and list an animal only once.)

Comments: _____

Superintendent Swine: Heath Biddix (360-772-5916)

4-H Swine Pen Request - Total Animals:

Number of Members Showing:	
Number of Pigs:	
Number of Pens Requested:	



Comments: _____