

Insect or Insect Relative?

Look for bugs around the schoolyard, in the soil, and on the plants. Classify what you find into types listed on your Insect ID pages (page 2-4), Types are Insect Group, Spider Group, or Centipede/Millipede Group.

Clue: Look closely with your magnifier to count the number of pairs of legs.



Bug Naturalist



Specimen number	How many pairs of legs?	Body shape (sketch)	Do I have wings?	Bug group name

Become a Nature Detective

We challenge you to:

- care for wildlife and treat them with respect
- explore and learn more about the ecosystems and ecology in Benton County
- share with your family and friends the special places and the incredible things you have learned in nature.

Name _____

I visited (place) _____

Date _____

<https://extension.oregonstate.edu/4h/benton>
 OSU Extension Service, Benton County
 4077 SW Research Way
 Corvallis, Oregon 97333
 541-713-5000

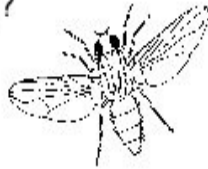


Oregon State University
 Extension Service

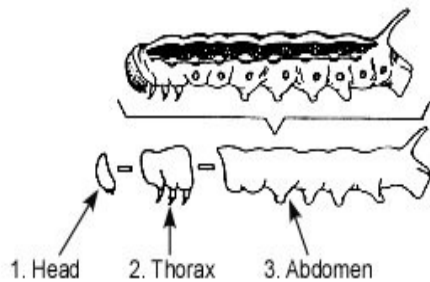
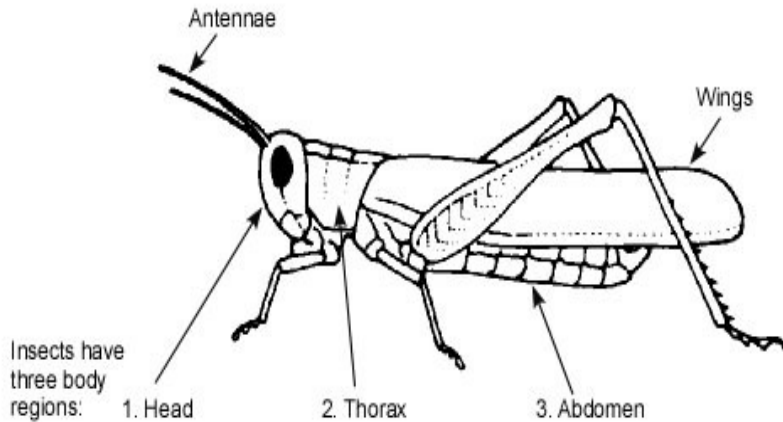
Does the bug have 6 legs (3 pairs)?



If it has 6 legs it is an *insect*.



Insects come in all shapes and sizes. Grasshoppers, butterflies, beetles, dragonflies, bees, and ants are all insects. All insects have three body regions, six legs, two antennae, and most have wings.



You can still see the three body regions in an insect's 'baby' or larval stage.

Try your hand at writing a poem! Become an bug that lives in your schoolyard habitat. Write a riddle to tell us who you are.

Example: The Fender's Blue Butterfly

Insect

Small, Silvery Blue

Fluttering, Floating, Resting

Pollinator, Beautiful

Fender's Blue

Now you try: Pick a bug: _____

- 1.) Write one word below that describes you:
- 2.) Write two words below that describe what you look like:
- 3.) Write three words below that describe how you move or where you live:
- 4.) Write two words below about how you contribute to the ecosystem:
- 5.) Write another word below that describes who you are:

1. _____

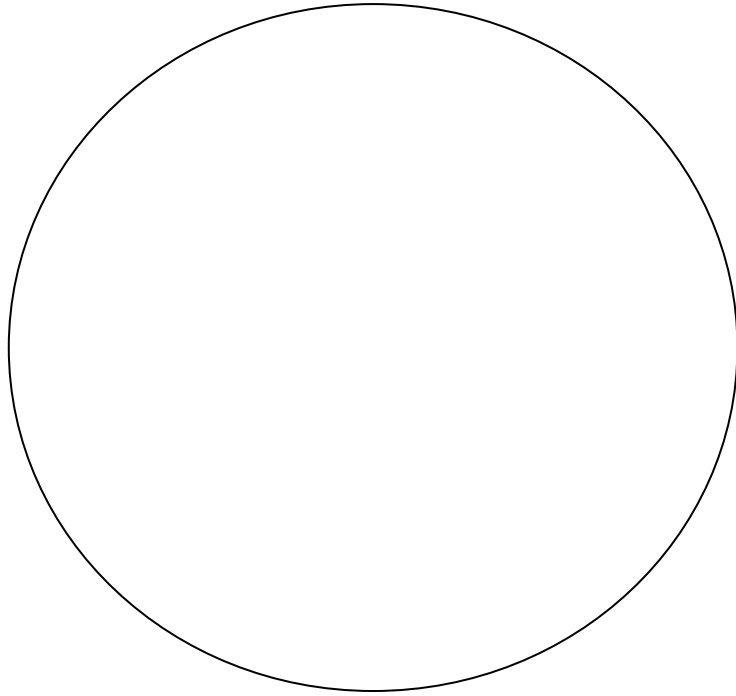
2. _____, _____

3. _____, _____, _____

4. _____, _____

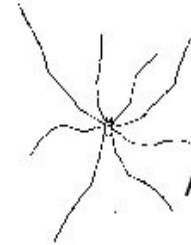
5. _____

“Through a Bugs Eye”



What do you see?

What does it remind you of?

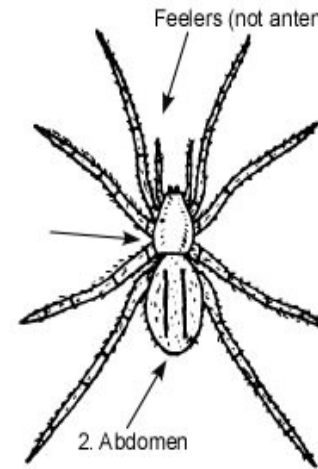


Does the bug have 8 legs (4 pairs)?

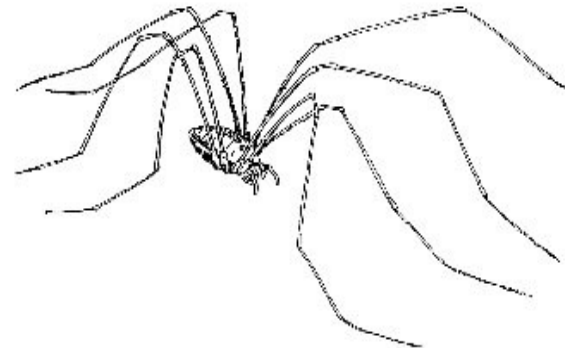


If it has 8 legs it is a spider.
A spider is in a group called *arachnids*.

Spiders, like all arachnids, have only two body regions, do not have antennae, do not have wings, and have eight legs. Other arachnids include scorpions, and ticks.



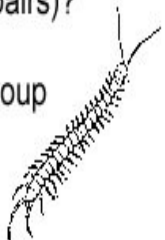
The tick's two body regions might be hard to see, but you can count 8 legs!



The daddy longlegs is in the arachnid group, but it is not a true spider because it does not spin a web.

Does the bug have many legs (12 or more pairs)?

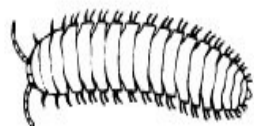
If it has many legs it is in the *centipede* group
or it is in the *millipede* group.



Centipedes and millipedes have antennae and lots of legs!



Centipedes have one pair of legs on each body segment.



Millipedes have two pairs of legs on almost all body segments.



Bug Detective



Be a bug detective. Look for signs of bug activity and decide what bug might have left each clue. Record the clue and make your best guess as to what it could be.

Case 1

Bug Clues: _____

I think the bug is a: _____

Case 2

Bug Clues: _____

I think the bug is a: _____