

WINNING STRATEGIES FOR PHOTOGRAPHING HALL EXHIBITS FOR CLATSOP COUNTY 2020 VIRTUAL FAIR!

Photographic entries for a virtual fair need to be thoughtfully created so the judges will be able to fairly judge what you have accomplished. Judges generally can turn the exhibit over, touch it, examine all the details ... Now in 1 to 3 photographs the judges need to “see” what you have done.

Good descriptive communication on **explanation cards** and choosing **interview judging** are more important than ever to help determine ribbons and awards.

Try to take good photographs in all entries to help showcase your projects.

Use the PHOTOSNAPPER flyers on the Clatsop County 4-H Facebook page for tips on how to take good pictures. (Rule-of-thirds, Leading Lines, natural framing, depth of field, patterns, texture, lighting)

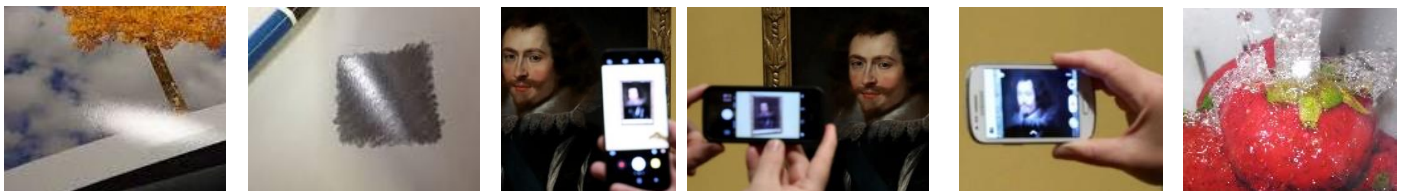
www.facebook.com/Clatsop4HExtension/

Show that your entry has a good general appearance **Clean, neat work.**

If you are shooting from the side or up or down, the artwork will be distorted. Shoot from the front.

Fill the frame with the project, the judge needs to see the details. No extra background.

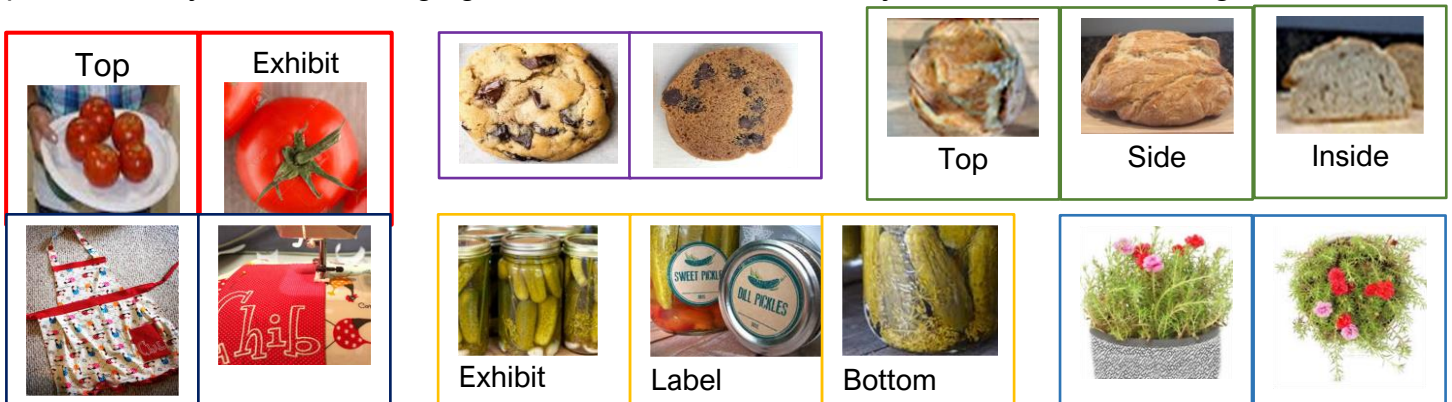
Try to use bright natural light to exhibit detail - lighting that best eliminates “glossy” glare. Avoid flash.



No glare No graphite glare No extra space Not from the side Shoot straight from front

Show that you used good techniques on your project **Attention to Detail**

Each class in ALL hall exhibits shows skill mastery the judge is looking for – it might be a hem or buttonholes in sewing – patterns and stitches in fiber arts - composition and technique in photography - media mastery or design in art projects. Food exhibits and preservation need to show uniformity of size, the proper color and evidence of proper technique – in horticulture the structure and health of plants, artistry in flower arranging and the health and uniformity of size in fruits and vegetables...



USE THE EXHIBITORS GUIDE to see how many pictures and what features to submit for the individual classes. Especially valuable, also in the exhibitors guide, is the judging criteria to show you what the judges are using to evaluate your project.

A 3-D object having a side light source, casts a shadow that shows 3-D depth on a 2-D surface, giving a cue that it has volume.



Good Luck on your fair projects. Remember “To Make the best better!”